



Portal > Knowledgebase > Support > WebMail > Exporting contacts from current webmail into Roundcube.

Exporting contacts from current webmail into Roundcube.

Jerry Bye - 2019-08-20 - in WebMail

How do I transfer my contact list from the existing webmail into the new roundcube.xecu.net webmail?

Please note: If you would prefer Xecunet Support handle the transfer of your addressbook for you, please give us a call at 877-XECUNET (932-8638).

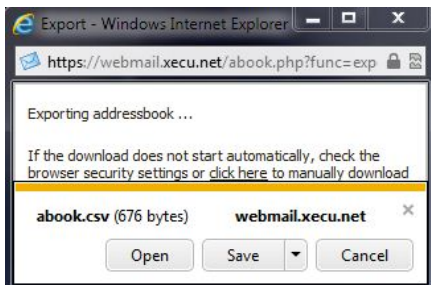
Step1:

Log into <http://webmail.xecu.net> using the Advanced interface. Click on the Address book icon seen below highlighted in red.



Step3:

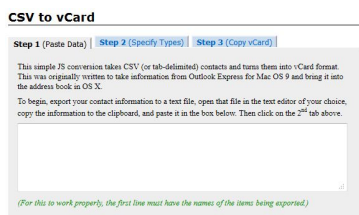
Save the abook.csv file to your desktop or other easily accessible location.



Step5:

In your web browser, go to: <http://www.artistec.com/CSV2vCard.html>

Right click within the box on Step 1, and choose Paste



Step2:

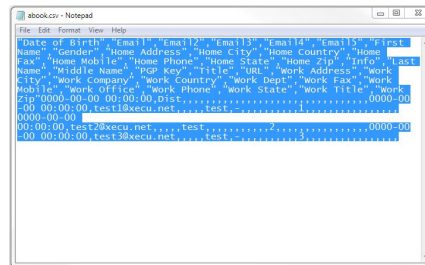
Then click on the Export icon.



Step4:

Locate your saved abook.csv file, right click it and select edit.

This should open up the file in Notepad. Click on the edit menu, and choose select all. Then click on the edit menu and choose copy.



Step6:

Click on the Step 3 tab. Highlight all the text in the box, right click on it and choose Copy.



Step7:

Go back to Notepad, click the File menu and choose New. Select the Edit menu and choose Paste. Once again click on the File menu, and but this time choose Save As.

Select Desktop or other easily accessible location, erase the *.txt. Name the file abook.vcf then click save.

Log into <http://roundcube.xecu.net>
Click on the import button.



Step8:

And browse to the abook.vcf file, and click Import.

